



***Wide-Open Town: Kansas City
in the Pendergast Era***



Diane Mutti Burke, Jason Roe,
and John Herron
(pendergastkc.org)

WIDE-OPEN TOWN

KANSAS CITY IN THE PENDERGAST ERA



EDITED BY
DIANE MUTTI BURKE,
JASON ROE, AND JOHN HERRON





Photo by JOHN ROEVER

History 10 Aug 2011







AL CAPONE PISSED HERE





From The Archive

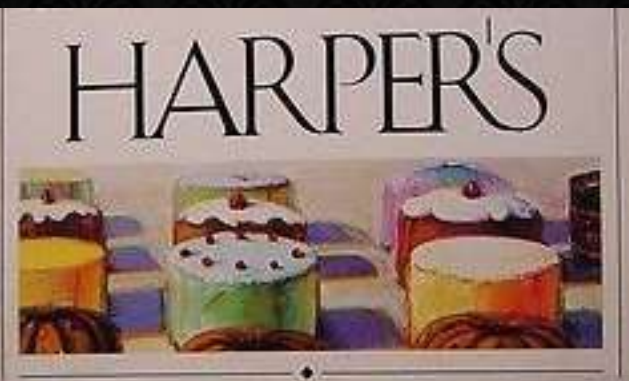
Thomas Frank
No. 7 June 1995

A Machine for Forgetting

Kansas City and the declining significance of place



Thomas Frank



CUPCAKE LAND

Requiem for the Midwest in the Key of Vanilla
By Richard Rhodes



Richard Rhodes



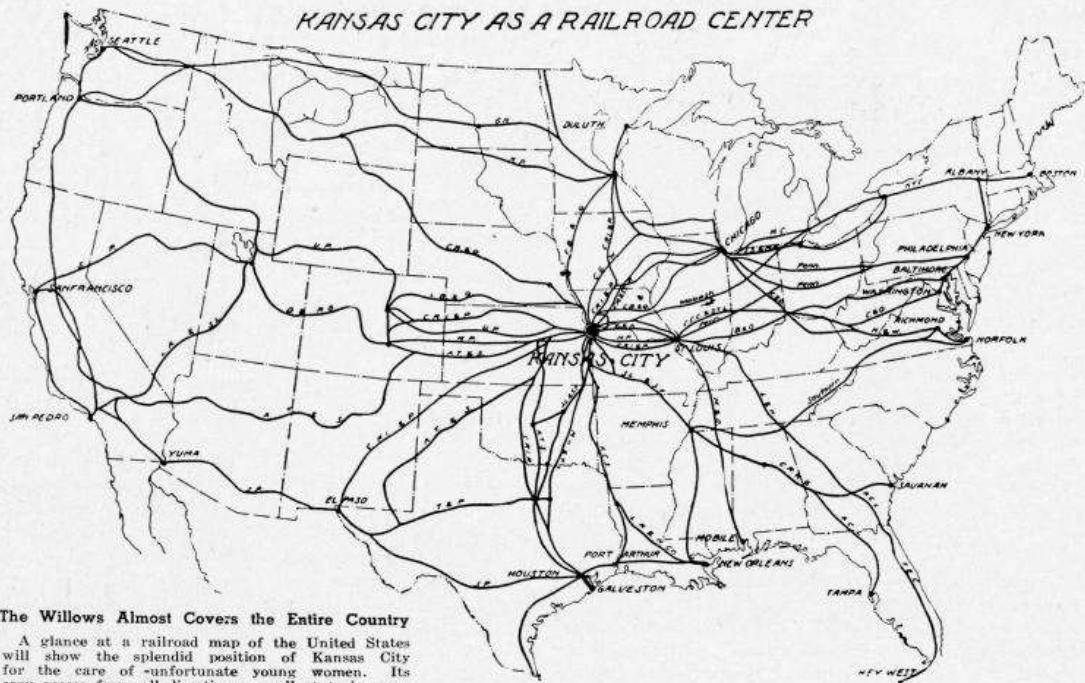
WIDE-OPEN TOWN

KANSAS CITY IN THE PENDERGAST ERA



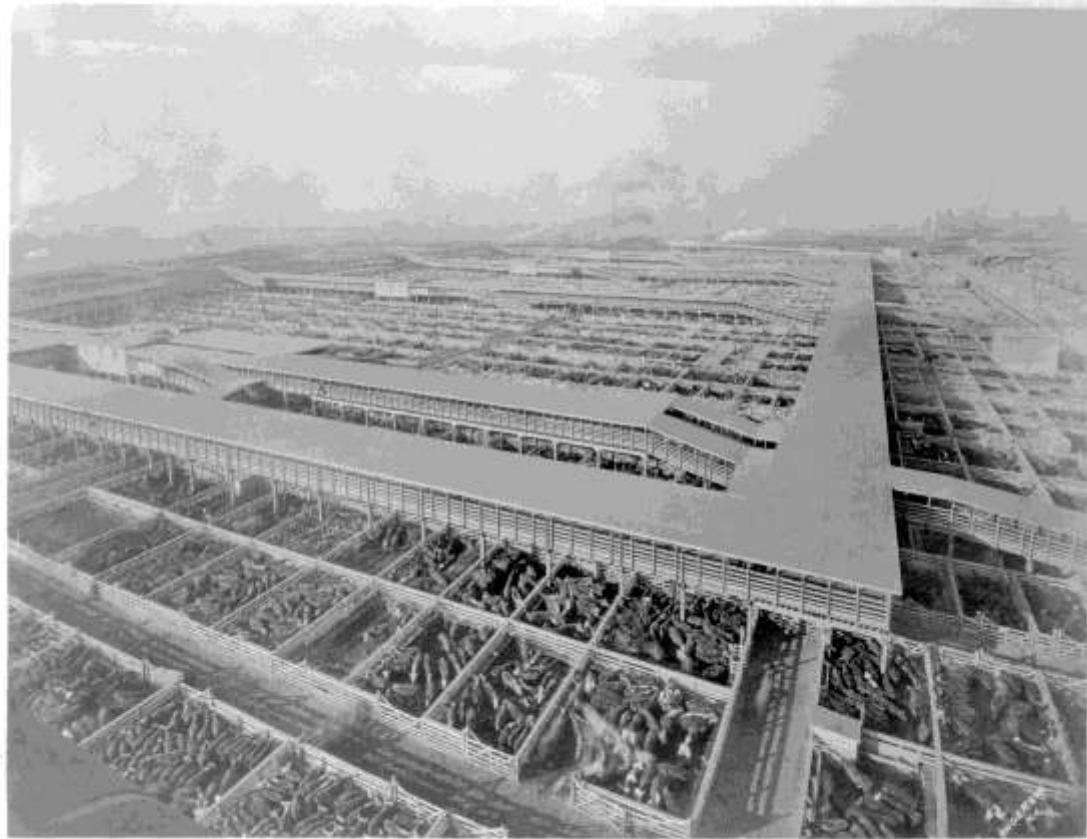
EDITED BY
DIANE MUTTI BURKE,
JASON ROE, AND JOHN HERRON

KANSAS CITY AS A RAILROAD CENTER

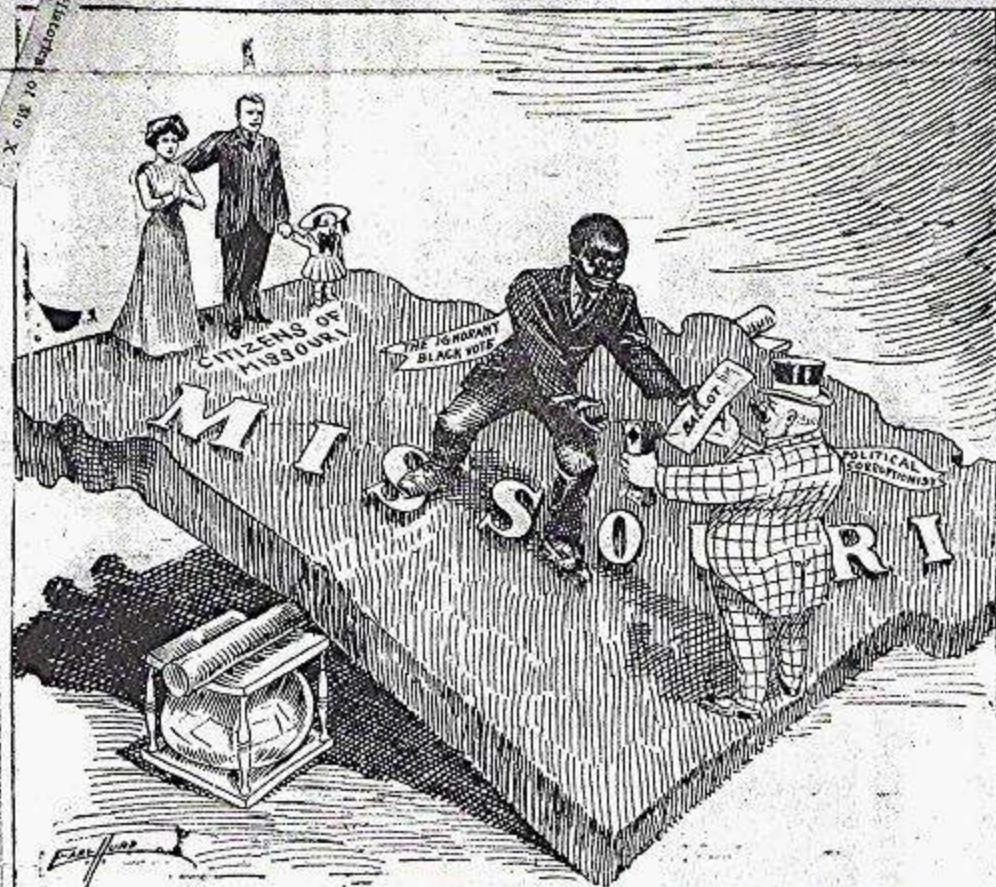


The Willows Almost Covers the Entire Country

A glance at a railroad map of the United States will show the splendid position of Kansas City for the care of unfortunate young women. Its easy access from all directions, excellent train service and central location gives it the pre-eminent position in the country for its work.



THE BALANCE OF POLITICAL POWER





Harry S. Truman with
Thomas J. Pendergast.

Democratic National
Convention, 1936



100-10
100-10
100-10

V 608-10

REC. KANSAS CITY PUBLIC LIBRARY, KANSAS CITY, MISSOURI



FEDERAL RESERVE BANK OF KANSAS CITY



46 THE MUSIC HALL, MUNICIPAL AUDITORIUM, KANSAS CITY, MO.



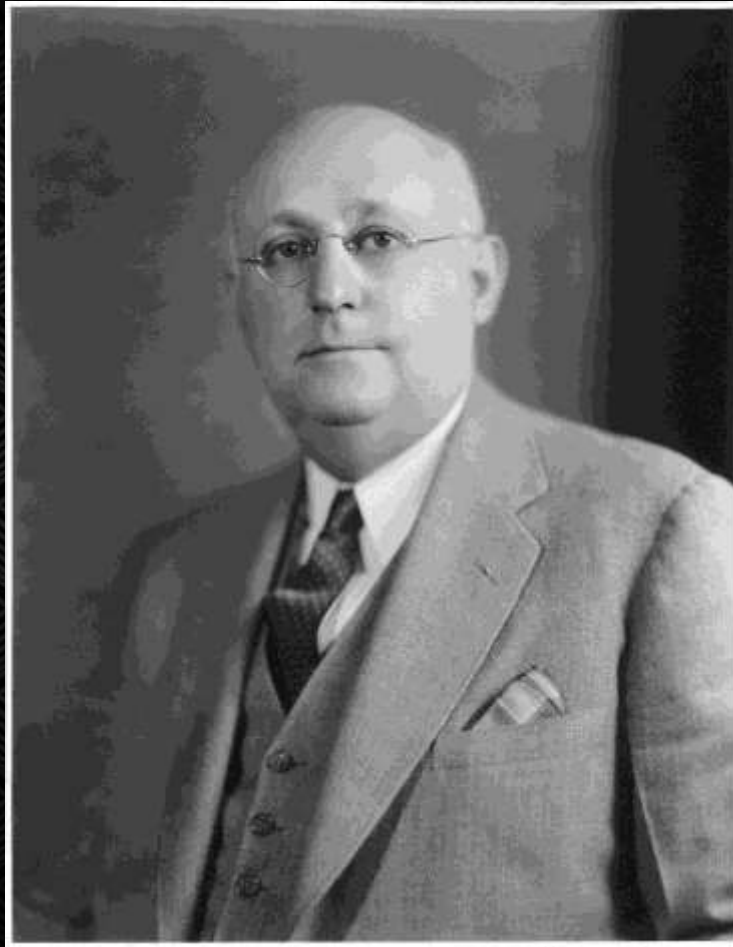


112—Swimming Pool, Swope Park, Kansas City, Mo.



2B-H1310





Jesse Clyde Nichols





1000 ACRES RESTRICTED
COUNTRY CLUB DISTRICT
HIGHLY DEVELOPED ^{and} PROTECTED RESIDENCE PROPERTY
WATER. LIGHT. GAS. ETC. *ATTRACTIVE PRICES.*
J. C. NICHOLS
HIGH CLASS RESIDENCE PROPERTY 1213-14 COMMERCE BLDG.





APR.

1928



Arthur C. Kinsley



Eugene D. Ward



Josephine Stewart Smith



Charles Smith



J. Roy Smith



Josephine Moore



Ed. McCarver



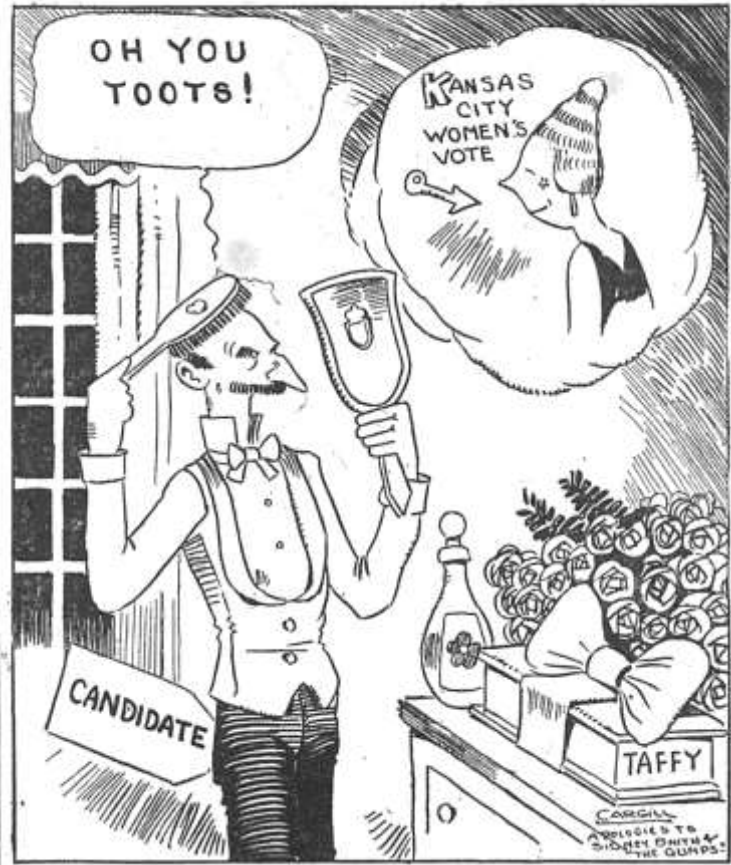
George H. Smith



J. B. Johnson

BOARD OF OFFICERS AND SUPERINTENDENT
The School District of Kansas City, Mo.
As organized April 5, 1928.

IN THE SPRING CAMPAIGN A YOUNG MAN'S FANCY





Lucile Bluford



Commercial Photo Co.



ADULT EDUCATION
ENGLISH CLASS
GUADALUPE CENTER
1018 W. 23
KANSAS CITY, MO.
DEC. 3 - 36
PLATE 214

10010304



William Rockhill Nelson
Gallery of Art and Atkins
Museum of Fine Arts
(now the Nelson-Atkins
Museum of Art)

University of Kansas City
Administration Building









Thomas Hart Benton, with his painting, "Rape of Persephone"

RAE BOURBON

A TRICK AIN'T ALWAYS A TREAT

Recorded Live From The
WORLD FAMOUS JEWEL BOX



*To be Played
Very Late
at Night*



Very High in Fidelity
(Stereo Tool)



*For
Elderly
Delinquents*



Very High in Fidelity
(Stereo Tool)



White

1261 BROADWAY.





THE KANSAS CITY PUBLIC LIBRARY

CIVIL WAR ON THE WESTERN BORDER

THE MISSOURI-KANSAS CONFLICT 1854-1865

HOME MAPS TIMELINE ESSAYS GALLERY LESSON PLANS PARTNERS ABOUT

Topics A-Z List Search...

Discover the Civil War's legacy in the Greater Kansas City region.

- Recipient of four major historical awards
- Featuring a Foreword on the Civil War in Kansas City by Rick Montgomery
- View original photos, letters, and maps from partner organizations
- Explore interactive features to see relationships between events and historic artifacts

FEATURED DOCUMENT

November 1864

A post by Jason Roe, Kansas City Public Library

Elections place Missouri's "radical" Republicans in power, Missouri rebuilds after Price's Raid, and the Supreme Court considers taxation of Shawnee lands in Kansas.

THE GATE OF LOUISIANA

MAP
Locations for regional Civil War sites

BLEEDING KANSAS, BLEEDING MISSOURI

THE LONG CIVIL WAR
ON THE BORDER





**Edited by Jonathan Earle
and Diane Mutti Burke**

THE PENDERGAST YEARS

Kansas City in the Jazz Age & Great Depression

THE KANSAS CITY PUBLIC LIBRARY

MENU  



[TOPICS](#) [IMAGE GALLERY](#) [ARTICLES](#) [TIMELINE](#) [SEARCH](#) [PROJECT PARTNERS](#) [ABOUT](#)

THE LONG STRUGGLE OVER BLACK VOTING RIGHTS AND THE ORIGINS OF THE PENDERGAST MACHINE



One of the defining aspects of "Boss" Thomas J. Pendergast's "machine" politics was its approach to African American voters. During the early 20th century, at a time when black people were routinely excluded from the vote by Democratic regimes in most of the former slave South, Pendergast's Democratic organization in Kansas City succeeded in part by attracting

PROJECT PARTNERS

This distinctive repository of images, artifacts, letters, and other primary sources is made possible through partnership with a number of archives, museums, and other organizations that participated in *The Pendergast Years* project. The Project Partners below have contributed curatorial insight and/or allowed the resulting images to be freely displayed on this website.

American Jazz Museum

[website](#) | [collection items](#)

Black Archives of Mid-America

[website](#) | [collection items](#)

Diocesan Archives of Kansas City – St. Joseph

[website](#) | [collection items](#)

Harry S. Truman Presidential Library & Museum

[website](#) | [collection items](#)

Internet Archive

[website](#) | [collection items](#)

Jackson County Historical Society

[website](#) | [collection items](#)

Kansas City Museum



Tom Pendergast Inmate File: Prison Record

UNITED STATES PENITENTIARY LEAVENWORTH, KANSAS	
RECORD OF <u>THOMAS J. PENDERGAST</u>	NO. <u>55295</u>
Alias <input checked="" type="checkbox"/> <input checked="" type="checkbox"/> <input checked="" type="checkbox"/>	Color <u>White</u>
Crime <u>Evide & Defeat Income Tax.</u>	Military or Civil <u>Civil</u>
<u>(1-3yrs Susp. for 5yrs Prob)</u>	
Sentence <u>1</u> years <u>3</u> months <u>X</u> days	
<u>Paid to the U.S. Clerk of Court K.C. Mo. Apr. 29th., 1940</u>	
Fine <u>\$10,000.00V / 1000000V</u>	Cost <input checked="" type="checkbox"/> <input checked="" type="checkbox"/>
Received at Penitentiary <u>May 29.1 1939</u>	From <u>WD-Mo-Kansas City</u>
Date of Sentence <u>May 22.1939(Stay of Exec)</u>	Sentence begins <u>May 29.1939</u>
Maximum term ends <u>Aug 28,1940</u>	Minimum term ends <u>May 30,1940</u>
Good time allowed <u>90</u> days	Occupation <u>Contractor</u>
	Age <u>66</u> Years
Eligible to parole <u>Oct. 28,1939</u>	<u>WANTED: Sheriff Jackson Co. Kans. City, Mo.</u>
	<u>(Bribing an Officer)</u>
Action of parole board <u>Cont. to Washington 11-1-39</u>	
<u>Nov. 21, 1939. Denied</u>	
Trusty Appointment and Grades	<u>11/8/39 C10</u> <u>4-7-39 AS T.J. Pendergast, #3907, arr. USM. Kansas City, Mo., chg. Vio. of sec. 145 B-Title 26.CO.</u> <u>5-8-39 AS T.J. Pendergast, #3981, arr. USM. Kansas City, Mo., chg. Vio. sec. 145 title 26. sent. CO.</u> *****
(OVER)	
DATE	M.A. - VIOLATIONS days lost

Description:

Prison record of Tom Pendergast, Inmate #55295, which includes terms and notes his conditional release on May 30, 1940. Pendergast was a Kansas City political machine and ties to organized crime, was found guilty of tax evasion in 1939 and sentenced to 15 months in the U.S. Penitentiary.

Creator: **U.S. Penitentiary, Leavenworth**

Object Type: **Miscellaneous Documents**

Date: **May 30th 1940**

Owning Organization: **National Archives at College Park, Maryland**

Modern Location: **Leavenworth, KS**

Organization: **U.S. Penitentiary, Leavenworth**

Pendergast Machine

Person Name: **Pendergast, Thomas J.**

Series: **Tom Pendergast Inmate File**

Finding Aid URL: **<https://catalog.archives.gov/id/580698>**

Rights Statement:

Publication, commercial use, or reproduction of this image or the data it contains requires prior written permission from the National Archives at College Park. This image also requires that credit be given to the National Archives at College Park.

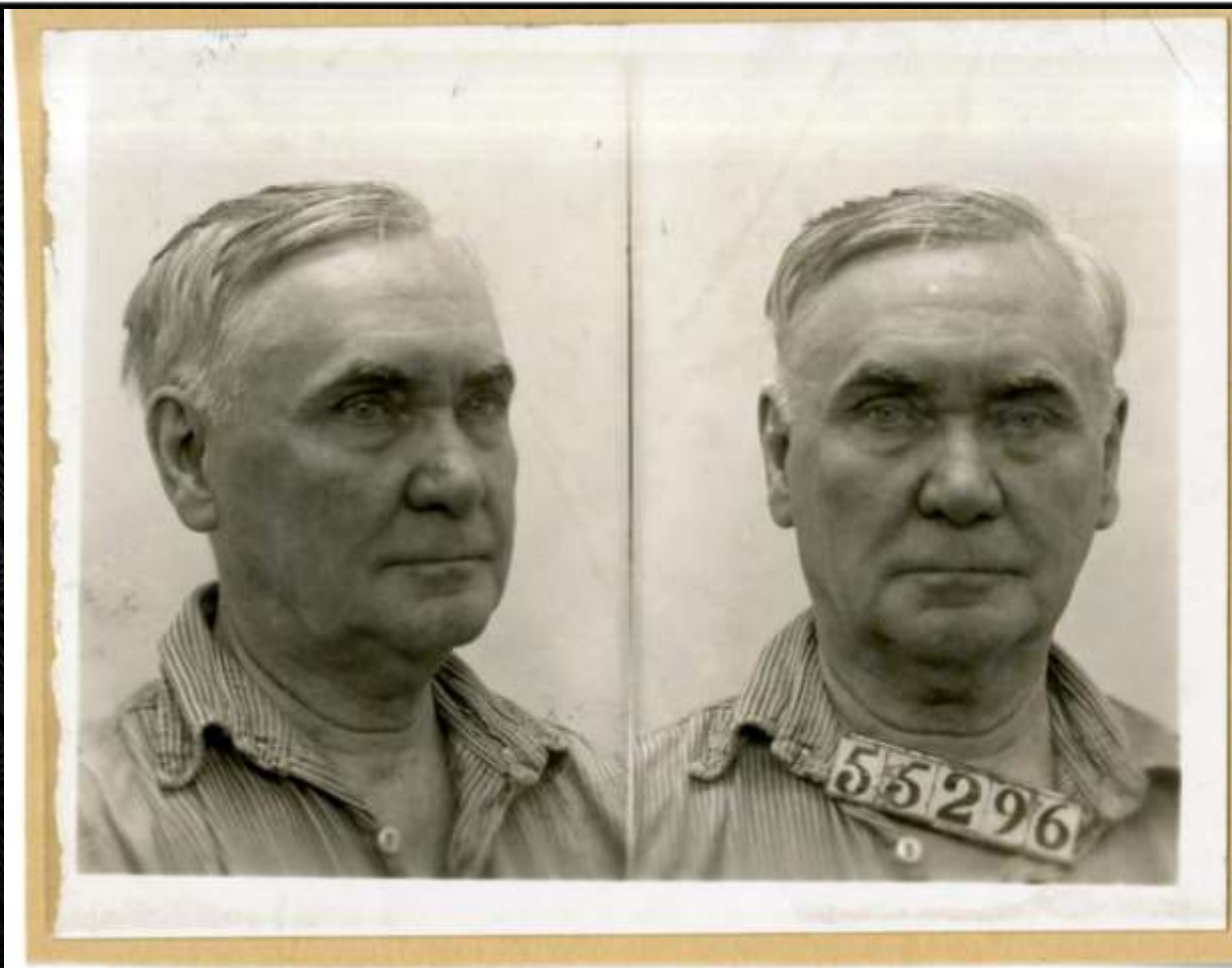
Call or Box Number, Collection Title:

NARA ID 580698, Notorious Offenders Files, 1919-1975

Digital Object Identifier: **NARACP-580698-0004-0012**

Transcription: **[NARACP-580698-0004-0012.pdf](#)**







MACHINE POLITICS, ORGANIZED CRIME, AND REFORM

[Articles](#) | [Image Gallery](#) | [Correspondence](#) | [Inmate Files](#) | [Court Cases](#)
[Election Fraud Map](#) | [Machine Businesses](#) | [Kefauver Committee](#)

[VIEW TOPIC](#)

RACE RELATIONS AND CIVIL RIGHTS

[Articles](#) | [Image Gallery](#) | [Correspondence](#) | [Ephemera](#) | [Bluford Case Files](#)

[VIEW TOPIC](#)

PROHIBITION AND VICE

[Articles](#) | [Image Gallery](#) | [Correspondence](#) | [Inmate Files](#) | [Court Cases](#) | [Prohibition Raid Map](#)

[VIEW TOPIC](#)

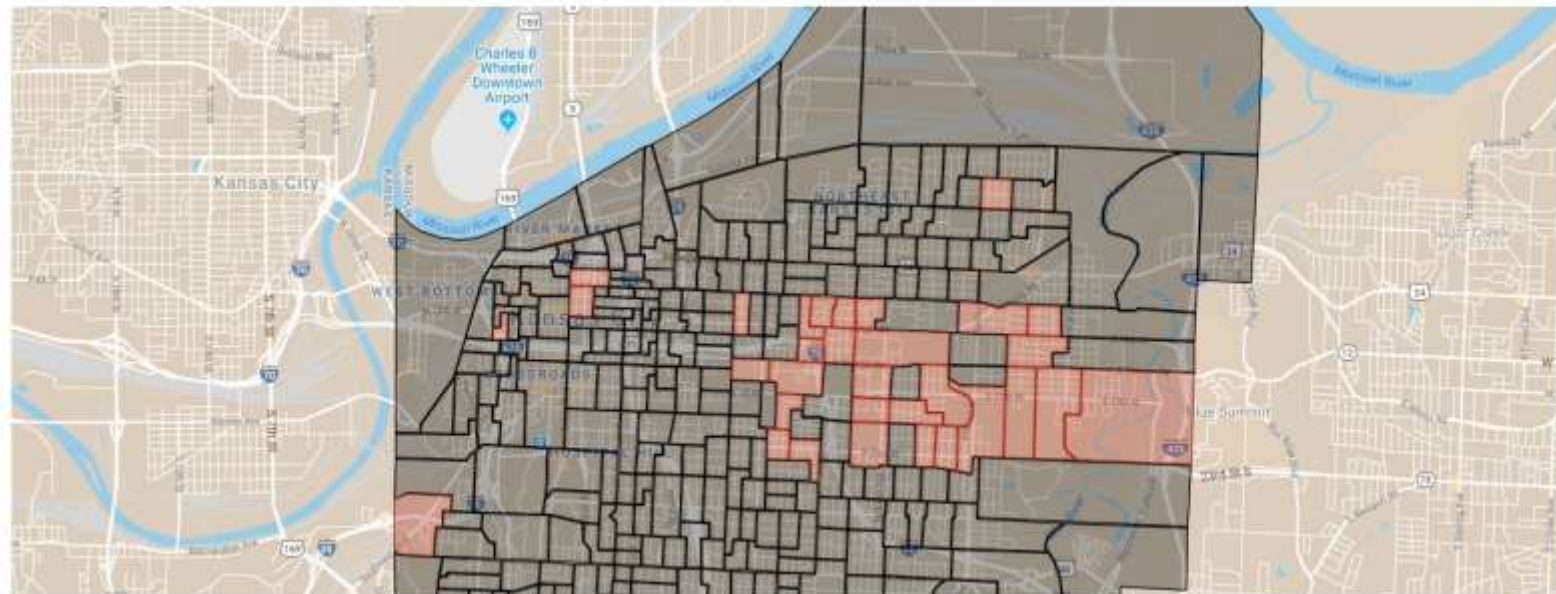
WOMEN'S RIGHTS AND ACTIVISM

[Articles](#) | [Image Gallery](#) | [Correspondence](#) | [Bluford Case Files](#)

MACHINE POLITICS, ORGANIZED CRIME, AND REFORM

1936 ELECTION FRAUD MAP

Precincts in red designate areas in which indictments were filed for election fraud. Click on a red precinct and follow the link to show all digitized court documents relating to election fraud in that area. [Expand Map »](#)



THE PENDERGAST YEARS

Kansas City in the Jazz Age & Great Depression

THE KANSAS CITY PUBLIC LIBRARY

MENU  

TIMELINE

November 10, 1911

Jim Pendergast Dies



James Francis Pendergast dies and leaves his First Ward Democratic political machine in the care of his younger brother, Thomas Joseph Pendergast.


Pendergast
Statue
in
Kansas City
Library



THE PENDERGAST YEARS: KANSAS CITY IN THE JAZZ AGE & GREAT DEPRESSION

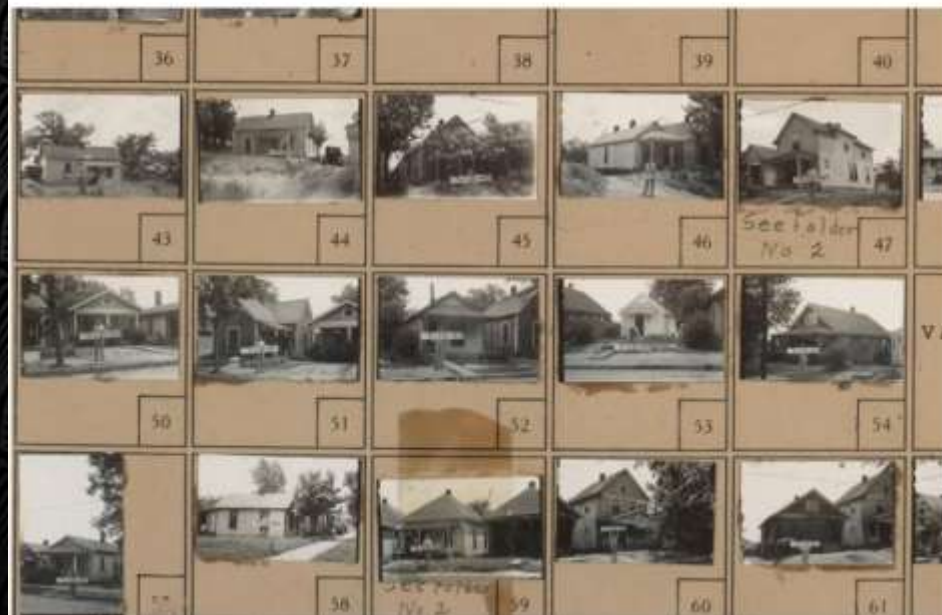
KANSAS CITY 1940

The 1940 Tax Assessment Photograph Collection

[City Map](#) [District Maps](#) [Find a Building](#) [About the Collection](#) [Search](#) [Building Approval](#)

[Home](#) » [Districts](#) » [District No. 7 North Map, Kansas City, Jackson County, Missouri](#)

✓ Operating in maintenance mode.



Tax Assessment Block Folder, District 7, Block 10

Creator: Jackson County (Missouri) Tax Assessor's Office

First of two folders contains photographs of residences and other buildings in Block 10, Independence Avenue south to 10th Street, and Ewing Avenue east to Cambridge Avenue.

Date: 1940

Genre: Photographs

Subject: Buildings

Houses

Street Names: Independence Avenue

10th Street

Ewing Avenue

Cambridge Avenue

Neighborhood: Sheffield

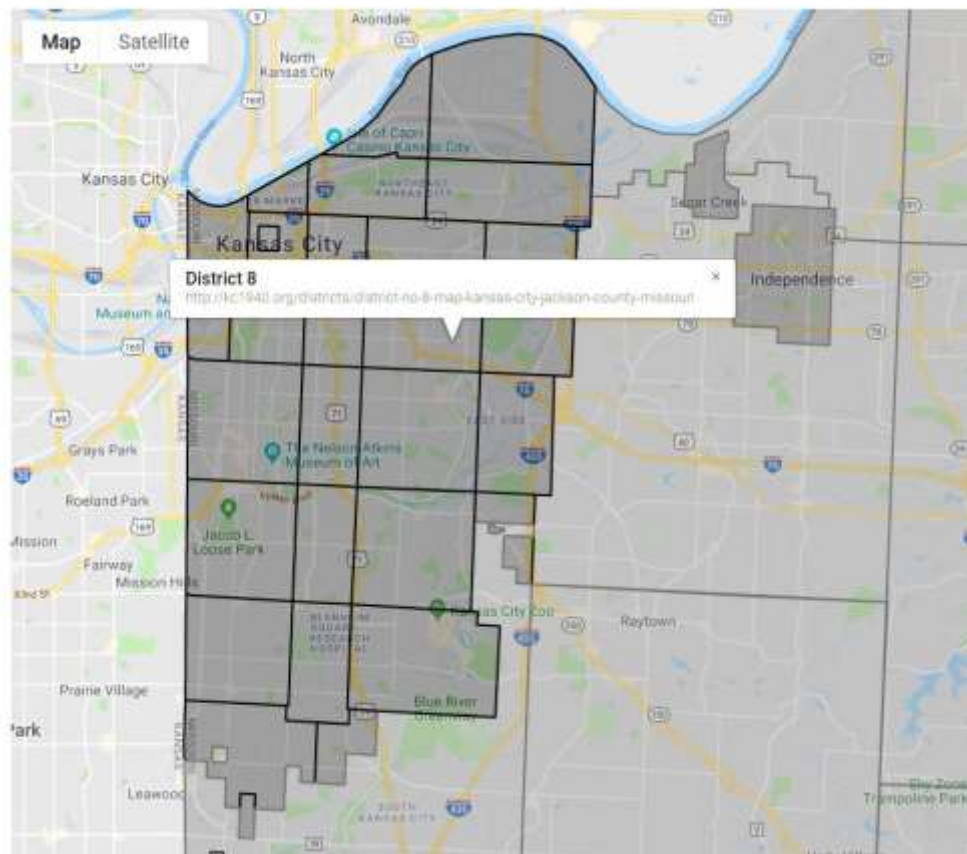
Additions / Subdivisions: West Winchester

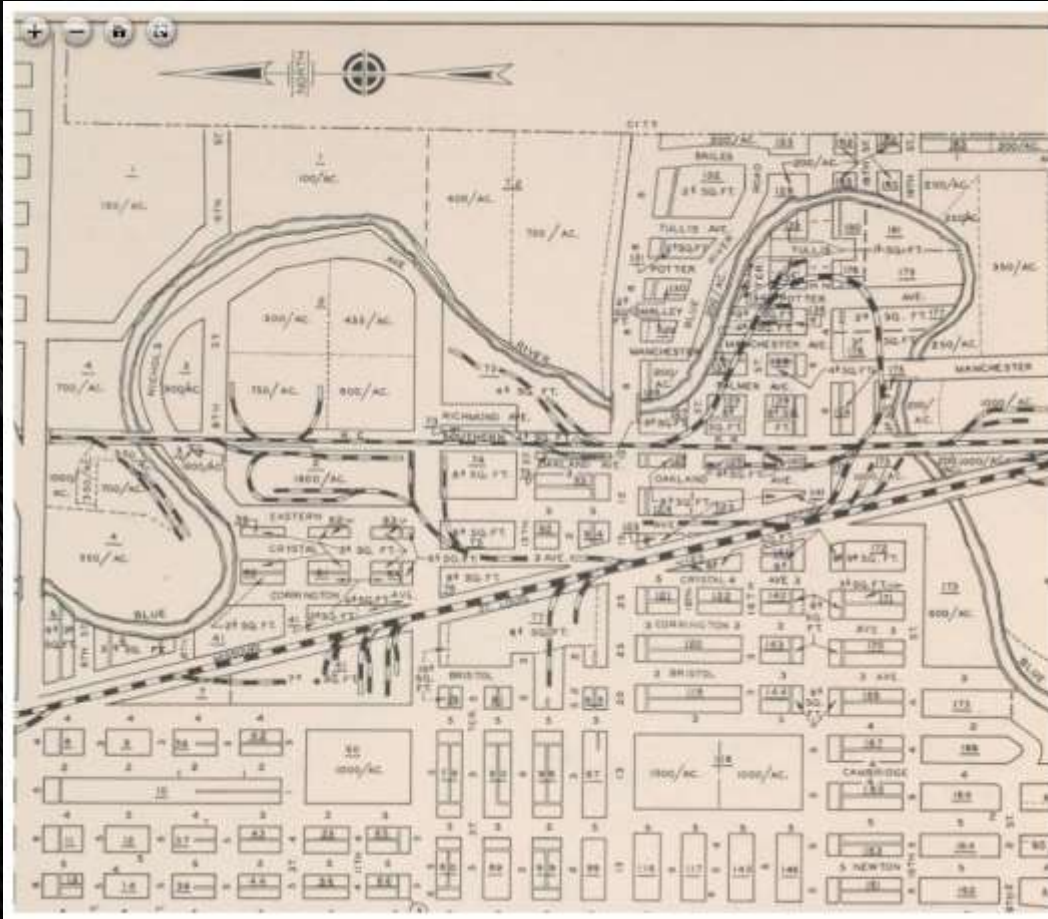
East Ridgeway

City: Kansas City

District: District No. 7 North Map, Kansas City, Jackson County, Missouri

CITY MAP





District No. 7 North Map, Kansas City, Jack

Detail map of the northern half of District 7 of the 1940 tax assessment, appraised values, and plat boundaries, as well as railroad lines, street area from Independence Avenue south to 31st Street, and from Top limits.

- Tax Assessment Block Folder, Kansas City, MO, District 7, Block 5
- Tax Assessment Block Folder, Kansas City, MO, District 7, Block 6
- Tax Assessment Block Folder, Kansas City, MO, District 7, Block 8
- Tax Assessment Block Folder, Kansas City, MO, District 7, Block 9
- Tax Assessment Block Folder, Kansas City, MO, District 7, Block 10
- Tax Assessment Block Folder, Kansas City, MO, District 7, Block 10
- Tax Assessment Block Folder, Kansas City, MO, District 7, Block 11
- Tax Assessment Block Folder, Kansas City, MO, District 7, Block 13
- Tax Assessment Block Folder, Kansas City, MO, District 7, Block 14
- Tax Assessment Block Folder, Kansas City, MO, District 7, Block 15
- Tax Assessment Block Folder, Kansas City, MO, District 7, Block 16
- Tax Assessment Block Folder, Kansas City, MO, District 7, Block 17
- Tax Assessment Block Folder, Kansas City, MO, District 7, Block 18
- Tax Assessment Block Folder, Kansas City, MO, District 7, Block 19
- Tax Assessment Block Folder, Kansas City, MO, District 7, Block 20
- Tax Assessment Block Folder, Kansas City, MO, District 7, Block 21
- Tax Assessment Block Folder, Kansas City, MO, District 7, Block 22
- Tax Assessment Block Folder, Kansas City, MO, District 7, Block 23
- Tax Assessment Block Folder, Kansas City, MO, District 7, Block 24
- Tax Assessment Block Folder, Kansas City, MO, District 7, Block 25
- Tax Assessment Block Folder, Kansas City, MO, District 7, Block 26
- Tax Assessment Block Folder, Kansas City, MO, District 7, Block 28



Tax Assessment Block Folder, District 5, Block 183

Creator: Jackson County (Missouri) Tax Assessor's Office

Folder contains photographs of residences, businesses, and other buildings in District 5, Block 183, from 18th Street south to 19th Street, and Woodland Avenue east to Euclid Avenue, including the buildings pictured.

Date: 1940

Genre: Photographs

Subject: Houses

Apartments

Stores & shops

Shoe stores

Automobile equipment & supplies stores

Churches

Schools

Apartments

Local Subject: Businesses

Buildings / Businesses: Progressive Shoe Service
Attucks School

Street Names: 18th Street

19th Street

Woodland Avenue

Euclid Avenue

Neighborhood: Wendell Phillips

Additions / Subdivisions: Barne's Addition
Hay's Subdivision

KANSAS CITY 1940

The 1940 Tax Assessment Photograph Collection

[City Map](#) [District Maps](#) [Find a Building](#) [About the Collection](#) [Search](#) [Building Approval](#)

[Home](#)

✓ Operating in maintenance mode.

BUILDINGS

10th Street Garage	12th Street Buffet	1413 Central Garage	14th Street Garage
14th Ward Democratic Club	15th Street Auto Wrecking Company	15th Street Barbecue	15th Street Cycle Company
20th Street Cafe	24th Street Hardware	24th Street Poultry and Meat Market	24th Street Recreation
24th Street Tavern	26th Street Buffet	2nd Ward Democratic Club	2nd Ward Republican Club
31st Street Garage	38th Street Market	39th Street Liquor Store	3rd Ward Democratic Club
3rd Ward Republican Club	400 Club	4th Ward Democratic Club	5th Street Cleaners
7-11 Club	85th Street Garage	8th Street Elevated Car Station	8th Street Tavern
8th Ward Democratic Club	8th Ward Republican Club	9th Street Fruit & Vegetable Market	A & A Mattress Company
A & B Boiler and Repair Company	A & B Junk Yard	A & C Electric Company	A & D Drug Stores
A & F Bargain Store	A & L Sign Company	A One Store	A-1 Radio Service
A. A. Electric Machinery Company	A. Amber Produce	A. C. Cabinet Company	A. C. Electric Type Company
A. D. Jacobson Plumbing and Heating	A. F. Nichols Company	A. F. Williams Tin Shop	A. Gordon Tire Shop
A. J. Paden Sheet Metal Works	A. J. Shirk Roofing Company	A. J. Stevens and Company	A. Nelson Transfer Company
A. O. Matteson Furniture and Sewing Machines	A. O. Thompson Lumber Company	A. P. Green Fire Brick Products	A. Robinson and Sons Fruit Company
A. Y. McDonald Manufacturing Company	A.B.C. Storage & Van Company	AAA Market	Aaron's Beauty Salon
Abbott Hotel	Abbey Kansas City Chair Rental Company	Abbey Slick Room Supply Company	Abbie Apartments
Abbott Apartments	Abbott Filling Station	ABC Battery Company	ABC Bearings
ABC Bonding Company	ABC Cabinet and Store Fixture Works	ABC Electric Service	ABC Fireproof Wholesale Company
ABC Furniture	ABC Lunch	ABC Towel Supply Company	ABC Wrecking Company
Abe's Loan Office	Abernathy Furniture Company	Abington Court Apartments	Abner-Hood Chemical Company
Acacia Upholstery Shop	Ace Bottle Company	Ace Electric Company	Ace Linen Service and Laundry

Filter by local subject:

- Businesses (1134)
- Gasoline Stations (147)
- Residences (68)
- Saloons (40)
- Missouri Pacific Railroad (31)
- Coal companies (30)
- Jackson County, Missouri (27)
- Kansas City Southern Railway (20)
- African Americans (18)
- Pharmacies (17)
- Loan companies (15)
- Chicago and Alton Railroad Company (13)
- Saint Louis and San Francisco Railway (13)
- Grandview, Missouri (12)
- Missouri River (12)
- Blue River (11)
- Blue Valley Park (10)
- North Terrace Park (10)
- Candy stores (9)
- Funeral Homes (9)
- Kessler Park (8)
- Penn Valley Park (8)

KANSAS CITY 1940

The 1940 Tax Assessment Photograph Collection

[City Map](#)[District Maps](#)[Find a Building](#)[About the Collection](#)[Search](#)[Building Approval](#)[Home](#)[Find a Building](#)

Operating in maintenance mode.

SEARCH BY CROSS-STREETS

Begin typing the street name and suggestions will appear.

Street Name

Street Name

RESET

APPLY

THE KANSAS CITY PUBLIC LIBRARY

WIDE-OPEN TOWN

KANSAS CITY IN THE PENDERGAST ERA



EDITED BY
DIANE MUTTI BURKE,
JASON ROE, AND JOHN HERRON