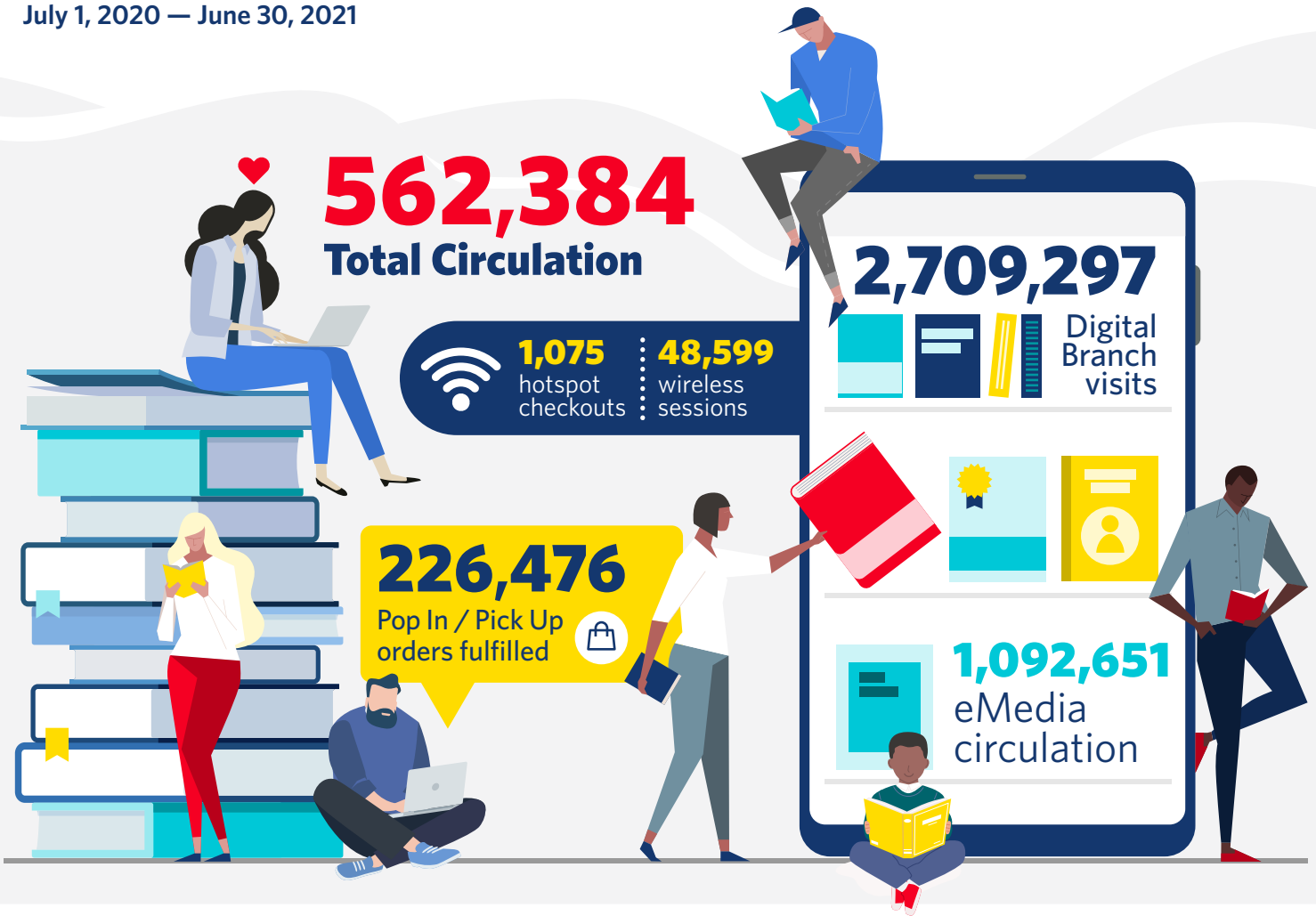
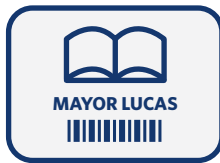


# Annual Impact Report

July 1, 2020 — June 30, 2021



**53,054**  
total in-person library visits



**190,180**  
active library cardholders



**23,208**  
new library cardholders

## PUBLIC PROGRAMS

**68** virtual signature events

**11,041** live views

**37,610** total views



## SUMMER READING AND LEARNING PROGRAM

June 1 — August 15, 2021

**14**  
parks  
visited

through  
Pop In at the Park  
sessions

**7,445**

registrants (all ages)

**1,276**

activity kits  
distributed

**18,698**

books read



## YOUTH & FAMILY ENGAGEMENT

**2,974**

youth programming  
participants

**4,000**

Kids Café meals  
distributed

through our partnership  
with Harvesters

**17,847**

Virtual Storytimes  
& D.I.Y. video views



**80,000+**

materials delivered  
by Mobile Services

BOOKMOBILE

**264**

ballots notarized  
at the library  
in November 2020

**9,306**

books donated  
through Books to Give



### REVENUES



Property taxes:	23,375,361
State and federal grants:	1,015,199
Investment income:	866,110
Contributions:	827,570
Charges for services:	241,889
Federal E-Rate distributions:	112,557
Other:	149,781

TOTAL REVENUES: **\$26,588,467**



### EXPENDITURES

#### PROGRAM SERVICES

Salaries and fringe benefits	13,076,829
Library materials	2,296,339
General operating	3,630,179
Building operations and maintenance	3,028,849
Capital outlay	2,713,003

**DEBT SERVICE** 550,592

TOTAL EXPENDITURES: **\$25,295,791**

KANSAS CITY  
PUBLIC LIBRARY

kclibrary.org | 816.701.3400

f t i @ @kclibrary

